

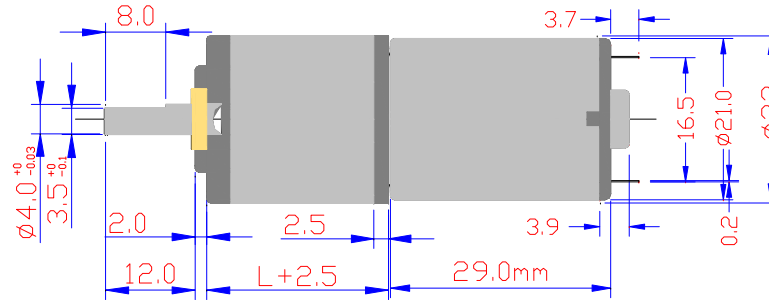
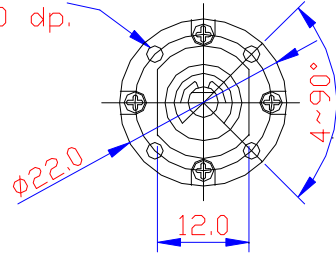


# Hennkwell Ind. Co., Ltd.

## PK22G Series of DC Planetary Gear Motor

### (A). Dimensional Figures :

4 Mounting Holes  
-4~M2×4.0 dp.



All unit in millimeter

### (B). Standard DC Motor Specifications :

Normal	No-Load		Rated Load				At Max. Efficiency(Max.)					Starting Characteristic			Stall Torque(Max.)	
	Speed	Current	Speed	Current	Output	Eff	Torque		Speed	Output	Efficiency	Voltage	Current	Resistance	No-Load	Current
	rpm	mA	rpm	mA	W	$\eta$ (%)	g-cm	mA	rpm	W	$\eta$ (%)	V	mA	$\Omega$	g-cm	A
3000RPM at 12VDC	3000	15.2	1870	62.8	0.575	38.151	18.63	44.8	2355	0.450	41.939	3.433	17.90	158.85	73.67	0.1322
6000RPM at 12VDC	6000	61.1	4920	233.2	1.512	54.038	32.83	249.4	4815	1.621	54.158	1.184	83.40	14.70	166.95	1.0180
15000RPM at 12VDC	15000	168.4	12750	594.3	3.923	55.008	40.76	747.1	12000	5.034	56.124	1.043	160.100	6.580	221.90	3.3202

### (C). Gearbox Specifications :

Reduction Ratio	Rated Torque	Max. Momentary Torque	Eff	Radial Play of Shaft	Thrust Play of Shaft	L (mm)
1/4	1.0kgf-cm Max	3.0kgf-cm	80%	$\leq 0.05$ mm	$\leq 0.03$ mm	11.80
1/16	1.5kgf-cm Max	4.5kgf-cm	75%	↑	↑	15.45
1/62	2.0kgf-cm Max	6.0kgf-cm	65%	↑	↑	19.10
1/231	2.5kgf-cm Max	7.5kgf-cm	55%	↑	↑	22.75
1/455	2.5kgf-cm Max	7.5kgf-cm	55%	↑	↑	22.75
1/1014	3.0kgf-cm Max	9.0kgf-cm	45%	↑	↑	26.40